



**CONDOR<sup>®</sup> MedTec**  
EXPAND YOUR POSSIBILITIES

XP-360° | Upper Arm Support | RotexShoe

Safely positioned.  
Perfectly supported.



Orthopaedics  
and Trauma  
Surgery



Spine  
Surgery



Condor<sup>®</sup>  
Patient  
Positioning



Condor<sup>®</sup>  
Accessories



made in  
Germany



## “Value creation begins with appreciation.”

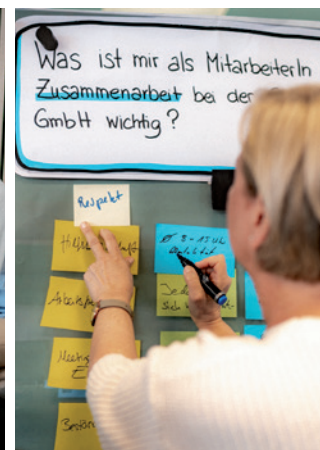
Since 1997, collaborative partnerships have been our top priority. We are convinced that this is the only way to create sustainable added value.

Condor® MedTec GmbH has been synonymous with high-quality medical precision technology since 1997.

We design, develop, and manufacture application-specific surgical devices – 100 percent “Made in Germany.” Our technologies are more than just surgical instruments. They meet the highest safety standards, improve patient care, and streamline surgical procedures. For

us, patient safety is always the top priority. Our patented products are “one-stop solutions” manufactured at our Salzkotten site using premium, durable materials.

Condor® Custom Solutions is the authorized and certified provider for repairs and service.





## Patient Positioning Systems:



Condor® Upper Arm Support.....page 4



Condor® XP-360° ..... page 8



Condor® RotexShoe.....page 12



“The **optimal positioning of patients is an essential part of my daily work.** As a quality officer in the operating room at the BG Clinic Ludwigshafen, **standardizing processes and positioning techniques** is particularly important to me. Additionally, I am also a clinical instructor and aim to impart knowledge to my young colleagues in a way that allows it to seamlessly integrate into their daily routines. The Condor® traction boot has contributed significantly to this, and we have been using it for several years now. The ability to replace the padding after each surgery and the boot’s surface, which is easy to clean, were key factors in our decision to purchase it, ensuring a **hygienically impeccable solution.** In daily OR practice, we also observe that patients’ feet exhibit a nice, even pressure distribution. Issues such as foot slippage and sliding out of the boot are now a thing of the past. **In short – we are completely satisfied!**”

*Elke Cardenas-Kaiser*

*OR Manager for training, continuing education, quality management, and clinical instruction,  
Berufsgenossenschaftliche Unfallklinik Ludwigshafen*



## Condor® Upper Arm Support: Designed for ideal and standardized arm positioning



**Enhanced patient  
safety thanks to  
customizable  
and simplified  
positioning**

**Ergonomic working  
conditions for the  
team – no need to  
move the patient**

**Optimal surgical  
situs exposure  
ensures secure  
and precise  
operating  
conditions**

**Improved  
efficiency thanks to  
standardized  
processes**

**Variable  
attachments:  
Greater flexibility  
in treating different  
indications**





Ortho-  
paedics

Trauma  
Surgery



Product information are available  
on our Upper Arm Support website

## Upper Arm Support in the past:

Conventional upper arm positioning significantly limits surgical options and compromises secure patient support.

The innovative solution by Condor® overcomes – opening up entirely new possibilities for the surgeon.

Positioning aids and  
OR table guide rails lack  
mutual compatibility

No adjustment  
to the arm length  
possible

Insufficient vertical  
adjustability



## With the innovative Condor® solution: Precise arm alignment across three axes

1.

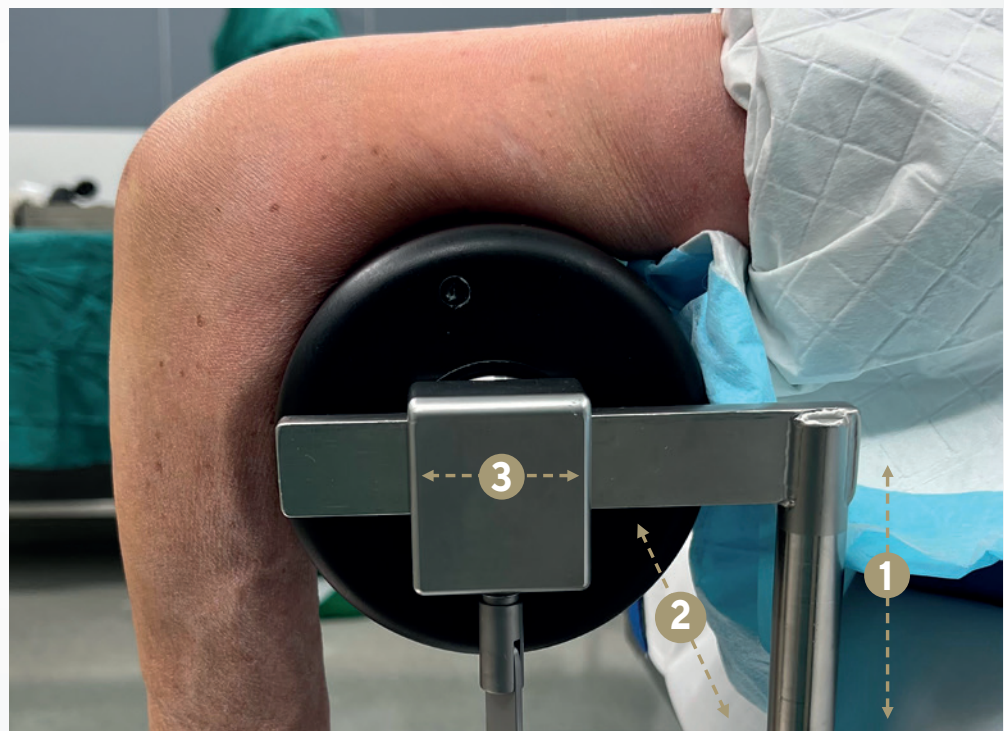
Stepless  
height  
adjustment

2.

Stepless lateral  
adjustment on the  
operating table

3.

Stepless lateral  
adjustment on the  
distance holder





# Condor® Upper Arm Support



## Your benefits:

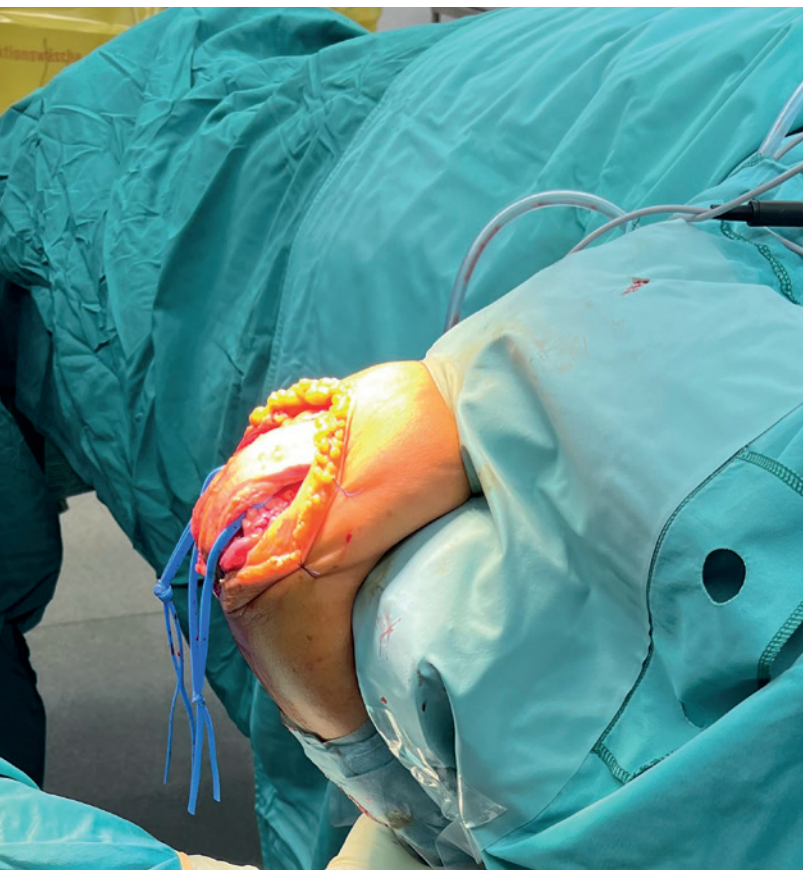
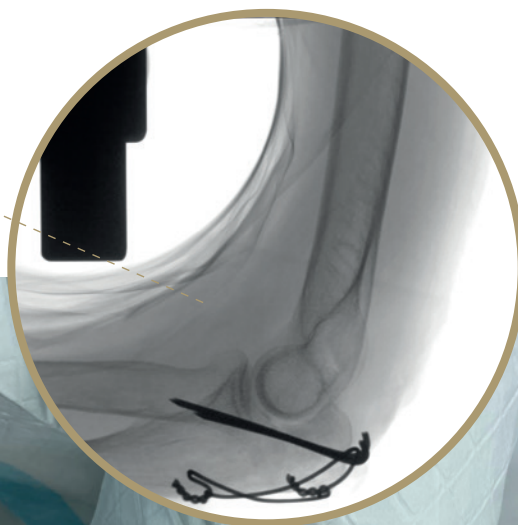
**Optimal arm  
adjustment  
allowing flexion  
beyond  
90 degrees**

**Facilitates  
accurate  
repositioning**

**Radiolucency:  
No interfering  
structures within  
the movement  
range of the  
X-ray unit**

**Unrestricted  
mobility for the  
operating surgeon**

Carbon rod enables  
optimal imaging





## Options overview: The right solution for every indication

**Set order number:**  
OTZ.0007.2021



**Pad available  
in two sizes**



Upper arm positioning curved  
OTZ.0002.2023



Upper arm  
positioning, straight  
OTZ.0001.2023



Segmental Pad  
OTZ.0003.2023



Upper arm positioning  
curved, small  
RO.0002.2013



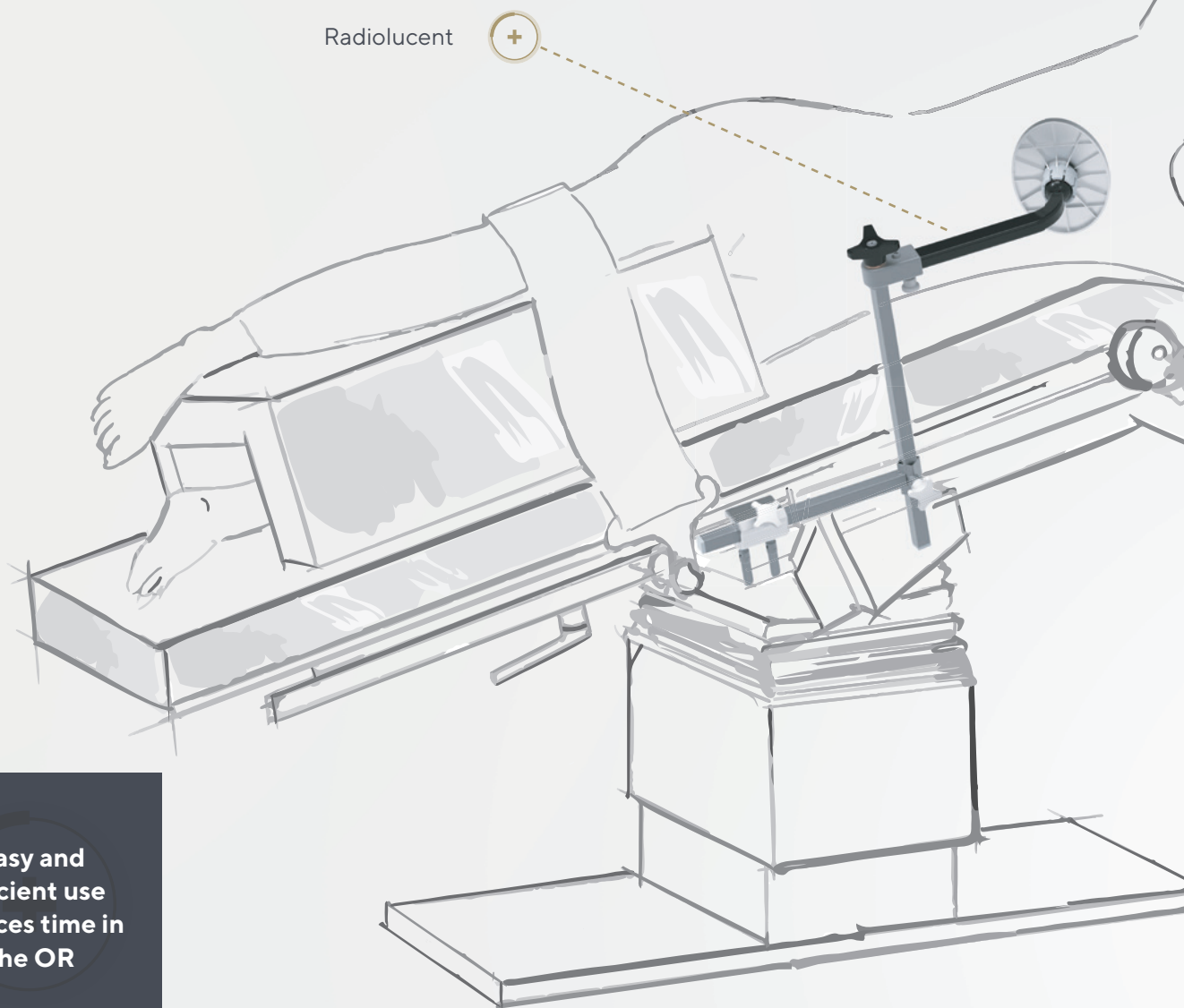
“The **Condor® Upper Arm Support** was developed in collaboration with our surgical team and **precisely meets the requirements we need for safe and efficient patient positioning.** What I particularly value are the precise positioning options for the arm, which allow for free intraoperative movement while maintaining stable support. As a result, visibility and working conditions during surgery are significantly improved. **Continuous optimization of patient safety and surgical conditions is a key concern** for us as a hospital. We are therefore pleased to have Condor® MedTec as a partner who understands our needs and works with us to develop innovative solutions.”

*Dr. med. Lutz Mahlke,  
Head of Department for Orthopaedics,  
Trauma Surgery, and Sports Trauma Surgery,  
St. Vincenz-Krankenhaus Paderborn*





## Lateral Support XP-360°: Ensuring stable lateral positioning and clear radiographic access



Easy and  
efficient use  
reduces time in  
the OR

Greater patient  
safety through  
even pressure  
distribution to avoid  
pressure sores

Optimized  
evaluation of the  
surgical situs  
during intra-  
operative imaging

Durable single-use  
pads designed  
to minimize the  
risk of germ  
transmission





Ortho-  
paedics

Trauma  
Surgery



Product information are  
available on our XP-360° website



In complex surgical procedures, regular monitoring of each individual step is essential to ensure that the operation – and consequently the patient's recovery – proceeds as planned. While X-ray imaging can provide valuable support, it is often difficult to obtain due to non-radiolucent supports.

Our Condor® XP-360° Lateral Support addresses this exact issue, enabling surgeons to continuously monitor and adjust positioning individually in order to achieve optimal X-ray imaging.

**An ideal complement:  
Enhance hygiene by using single-use pads  
to minimize the risk of germ transmission**

Set of pads for Condor® XP-360°  
consisting of:

- 10x Pads small  
Ø 93 mm  
(OTZ.0049.2019)
- 10x Pads large  
oval 186 x 136 mm  
(OTZ.0050.2019)



## Lateral Support XP-360°

XP-360°



### Your benefits:

Optimal imaging  
thanks to  
radiotranslucent  
material

Firm hold in  
lateral position

Ball joint for  
individual  
adjustment

Optional pad sets:  
Available in two  
different sizes

Easy  
assembly

Simple  
to clean

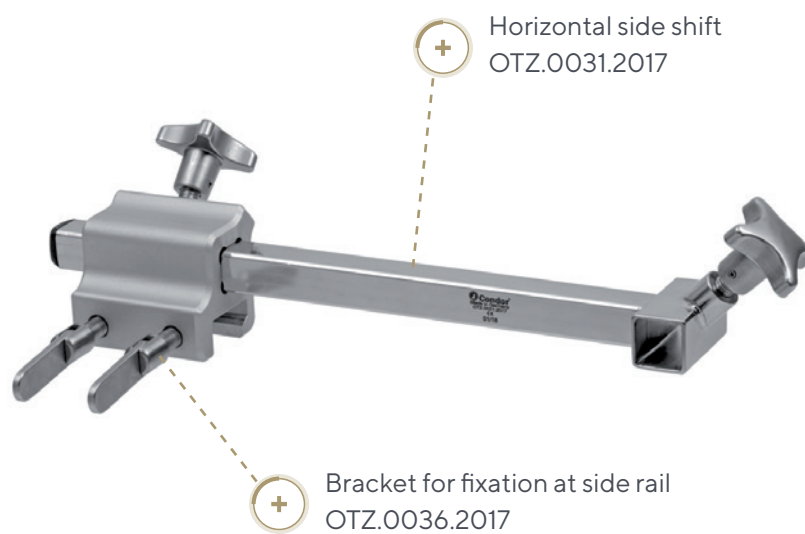
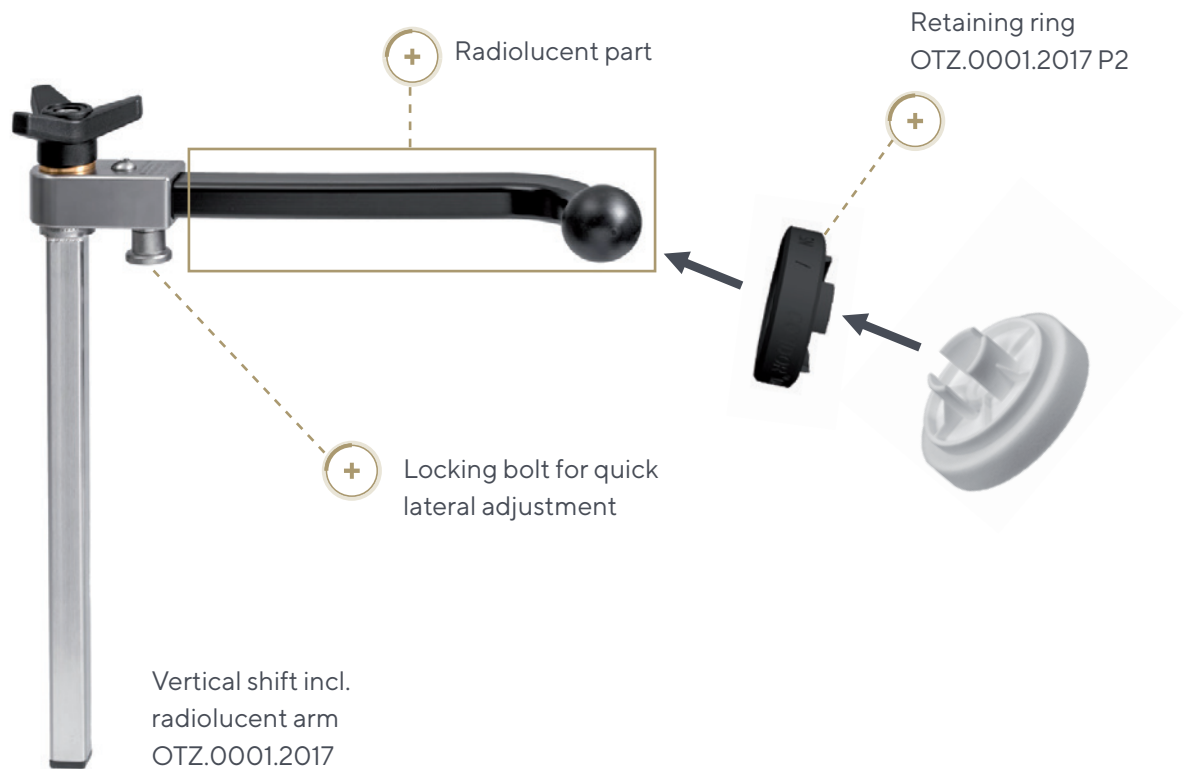
Reduced  
risk of germ  
transmission

**Set order number:**  
OTZ.0032.2017





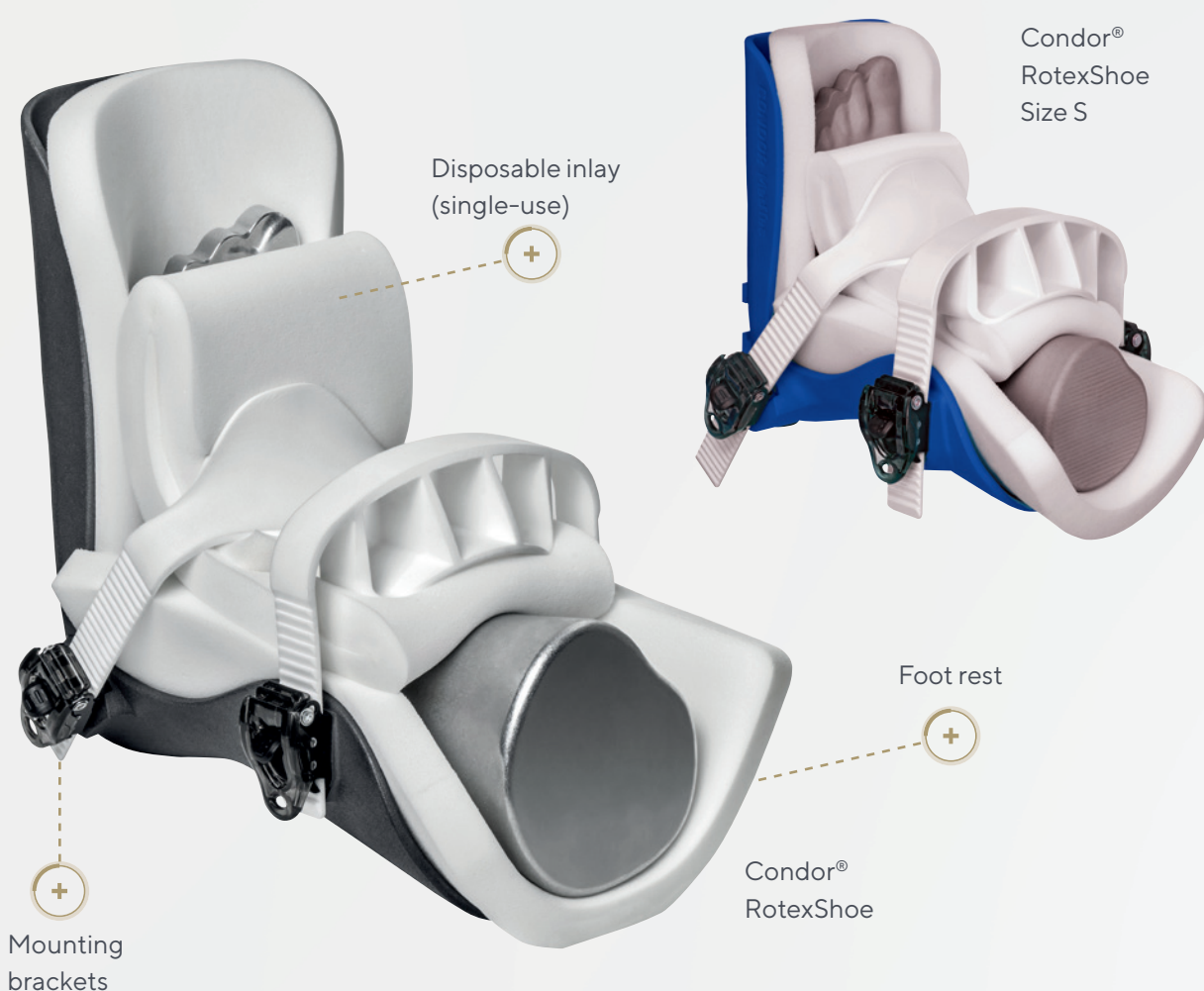
## Components:





# Condor® RotexShoe: Standardized foot positioning for relevant surgical procedures – ensuring maximum hygiene and patient safety

RotexShoe



**Reduced risk of  
infection thanks  
to hygienic safety  
throughout the  
entire surgical  
process**  
(including pre- and  
post-operative care)

**Prevents  
post-operative  
complications like  
pressure sores or  
foot-related injuries  
due to slippage**

**Standardized,  
reproducible  
foot fixation helps  
to reduce costs**

**Saves personnel  
resources as  
fixation can be  
performed by a  
single person**





Hip Endo-  
prosthesis

Hip  
Arthroscopy

Trauma  
Surgery



Product and application videos are available on our RotexShoe website



"Perhaps the new standard in foot fixation for extension table positioning. The shoe is a single-piece construction made of plastic, making it relatively lightweight. The surface is smooth, making it of course easy to disinfect. It features various docking points compatible with various traction spindle systems. For patient positioning, all that's needed is a three-part soft foam kit – nothing more! [...] **What truly impressed me during the first application was the speed with which I was able to position and secure the foot by myself.** Time is money! [...] In my opinion, this is **the future of foot positioning for extension table setups.**"

*(Excerpt from: OP Journal 2021 37th Year, pages 126-130, special edition Positioning of the Foot in Extension Table Positioning)*

*Alexander Motzny Deputy Head of Nursing, Operating Room/Head AEMP, Surgical Department/AEMP, Tübingen Accident Clinic*



**A perfect fit: Durable traction boot and hygienic single-use inlay set including mounting brackets**

- Increased hygiene safety through the use of single-use padding: one dedicated set per patient
- Time and cost advantage: No additional, complex padding required for positioning



# Condor® RotexShoe



## Your benefits:

**Enhanced hygiene safety** through the use of single-use pads

**Secure positioning** thanks to adjustable, firmly fixable combination of foot rest, padding and mounting brackets

**Stable fixation** even under heavy load - withstands traction forces of up to 80 kg

**No need for complex or extra padding**

**Fast positioning** time of the traction boot

**Reduction of shear forces** through even pressure distribution when pressing down the mounting brackets

**Even pressure distribution** for skin protection

**Lightweight, highly durable** foot rest

**Easy cleaning** thanks to the smooth surface

**Ideal for patients with latex allergies** - 100% latex-free design

**Compatible** with all standard extension tables

**Simple, intuitive** handling

### Combined use possible with

Conventional operating tables with standard rails

Condor RotexTable®

Condor ES®

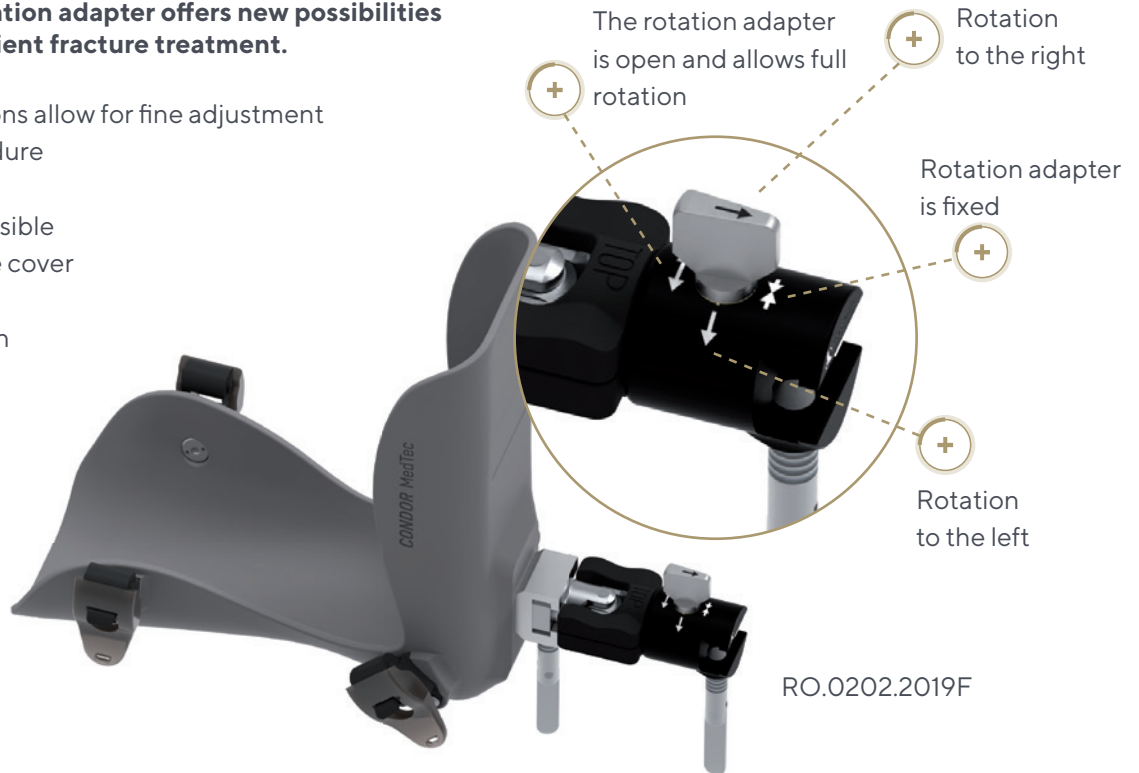


## Rotation adapter: For highest stability during rotation

**The optional rotation adapter offers new possibilities for safe and efficient fracture treatment.**

Four setting options allow for fine adjustment during the procedure

- Operation possible through sterile cover
- Easy handling for the surgeon

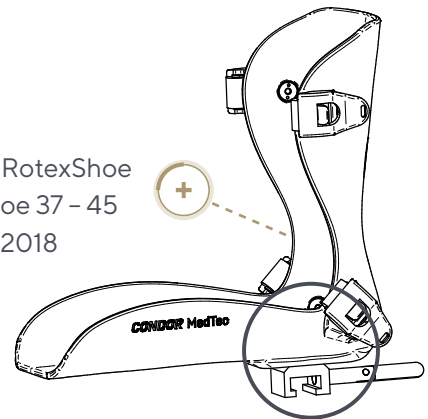


## Slide rail connections for the RotexShoe:

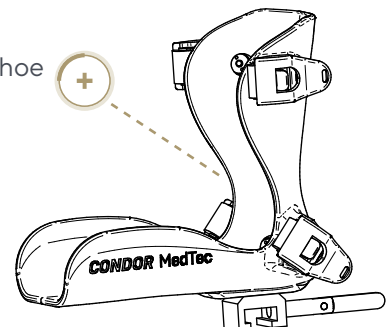
**Universally compatible: The RotexShoe fits all common OR tables with a standard side rail.**

When used with the RotexTable®, the traction boot is also applied in minimally invasive hip arthroplasty procedures – for example, the Direct Anterior Approach (DAA). A dedicated interface is available for this technique.

Condor® RotexShoe  
Size of shoe 37 – 45  
RO.0162.2018



Condor® RotexShoe  
Size S  
Size of shoe < 37  
RO.0082.2019



No connection to existing extension table available? We are glad to collaborate on a custom-fit solution.





[www.condor-medtec.de/en](http://www.condor-medtec.de/en)

### **Condor® MedTec GmbH**

Dr.-Krismann-Str. 15

33154 Salzkotten

Germany

Telefon: +49 (0) 52 58 - 99 16-0

Fax: +49 (0) 52 58 - 99 16-16

E-Mail: [info@condor-medtec.de](mailto:info@condor-medtec.de)

Web: [www.condor-medtec.de/en](http://www.condor-medtec.de/en)

Condor® is a registered trademark of Condor® MedTec GmbH in Germany and other countries. All rights reserved, in particular for utility, design and other patents. Technical changes and delivery possibilities reserved. The names in this document may be trademarks, the use of which by third parties for own purposes may breach the rights of the owner.